

# Energy Efficiency Case Study

## Why Upgrade your Facility's Lighting?

With recent advancements in technology, LED lighting often offers quick simple paybacks and can reduce lighting energy costs by 60%-70%. Maintenance costs can also be eliminated as most LED technology is rated for 100,000 hrs. which is more than 11 years in a 24/7 application. This will virtually eliminate all of your lighting maintenance costs for years to come.

## About SEMCO

If your business is interested in cutting energy costs or financing an energy efficiency project to create immediate positive cash flow, SEMCO can help you. We help businesses save energy by providing turnkey energy saving solutions like LED lighting, heating and cooling controls and more. Just reach out below for additional information.



www.theseemco.com  
P.O Box 4724  
Gulf Shores, AL 36547  
(251) 752-8548



## **Rex Lumber**

Dating back to the early 1900s, Rex Lumber has a long and successful history in the lumber business. One reason behind their success is the drive to find measures to improve efficiency and cut costs. With the help of **SEMCO**, Rex Lumber realized that a LED lighting upgrade was a way to achieve both measures. The LED upgrade cut their lighting energy usage by **65%** and eliminated lighting maintenance costs for more than **11 years** since most of the LED fixtures installed are rated to last **100,000 hours**. On average, light levels increased by **10%-15%** depending on the area. In addition, the project received over **\$148,000** in incentives; these incentives coupled with the substantial energy savings, shortened the payback period to only **1.48 years**.

## Annual Savings

(calculations provided courtesy of SEMCO)

- Energy Savings \$90,004
- Maint. Savings \$9,000
- Displaced Energy 1,058,821 kWh

## Impact of Upgrade

- Simple Payback 1.48 years
- Financial Incentives \$148,142

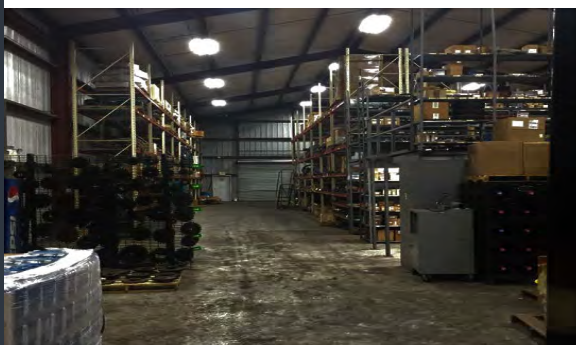
## What Rex Lumber Is Saying

*"We knew that LED lighting would help us save energy, but we did not realize all of the financial incentives out there to help cover the cost of the new lighting. SEMCO designed a lighting project that would help us maximize our savings."*

*- Jared Banta, Manager*

## Environmental Equivalents

- 1,640,491 lbs. of carbon dioxide
- 236 tons of waste sent to landfill
- 83,731 gallons of gas not burned
- 110 homes powered (1 yr)
- 157 cars taken off the road (1 yr)



# Rex Lumber Mill Project



**BEFORE**

**AFTER**

